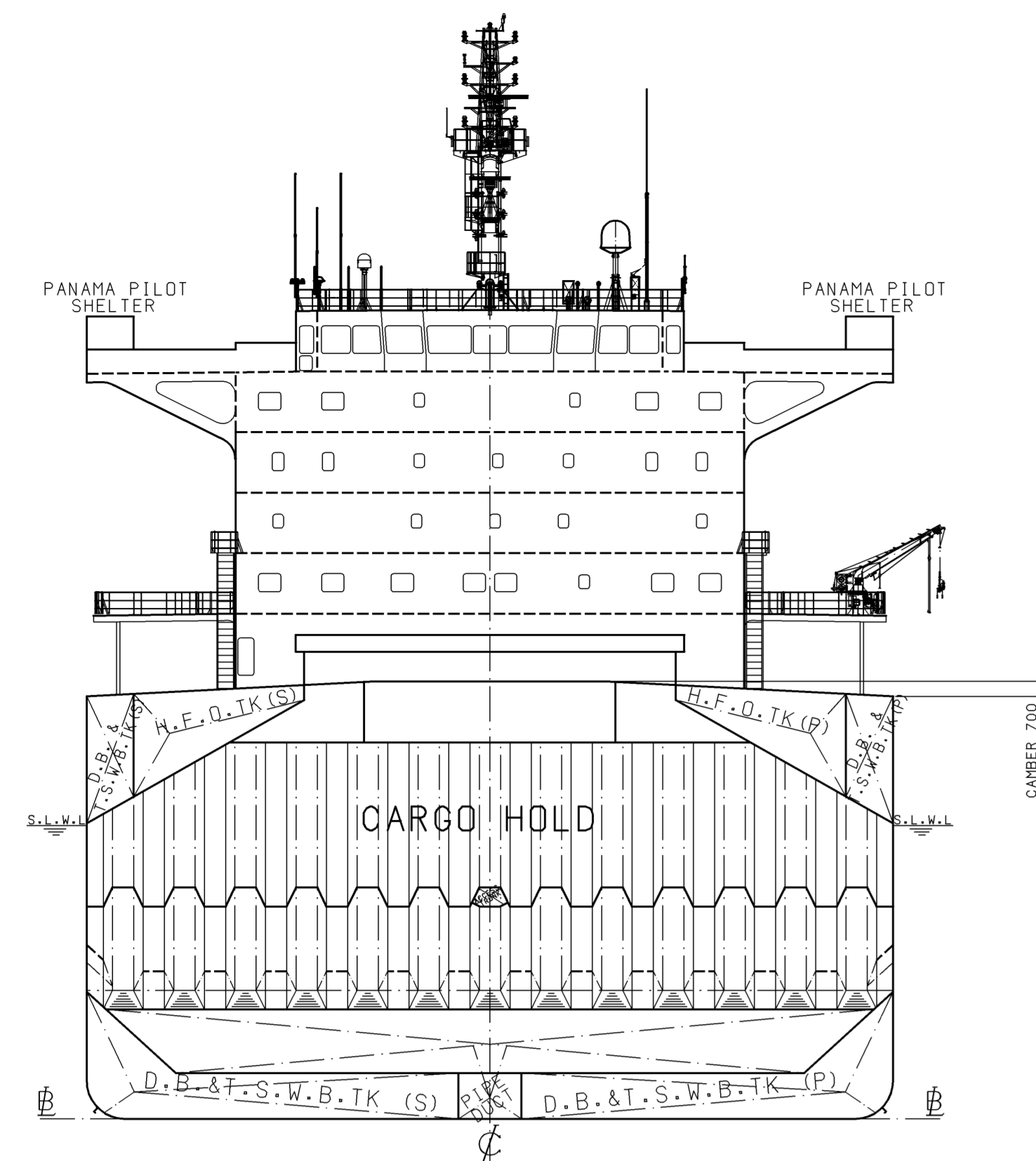


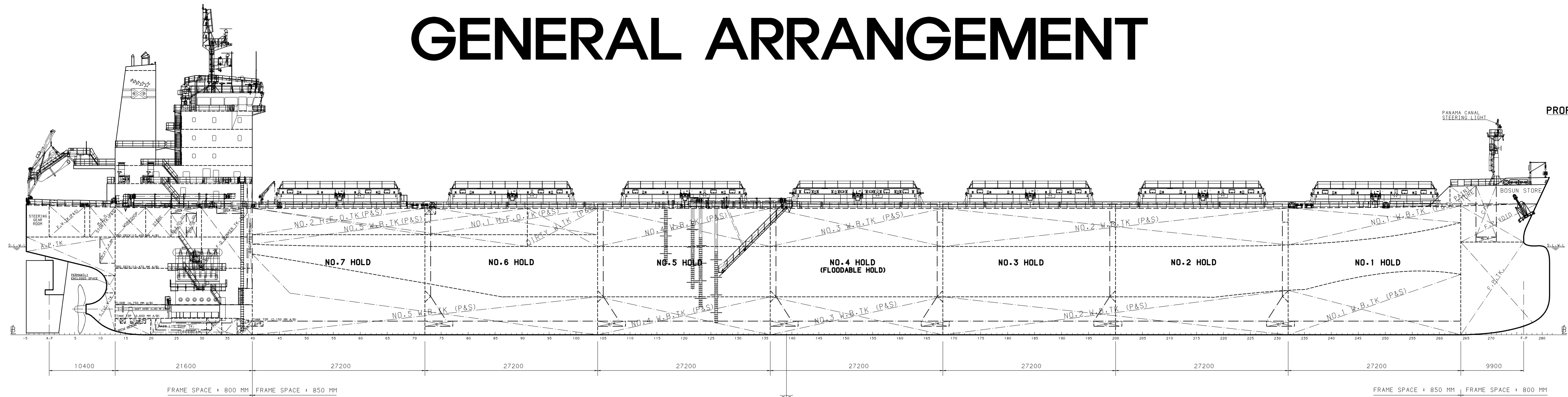
GENERAL ARRANGEMENT



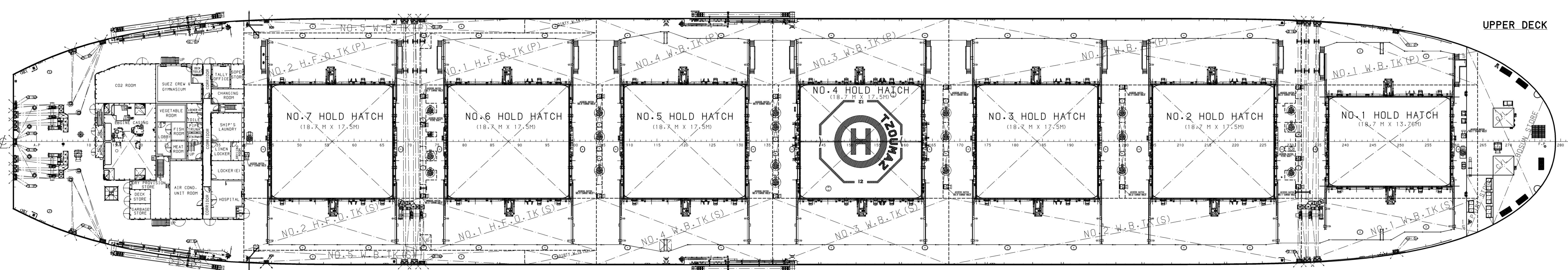
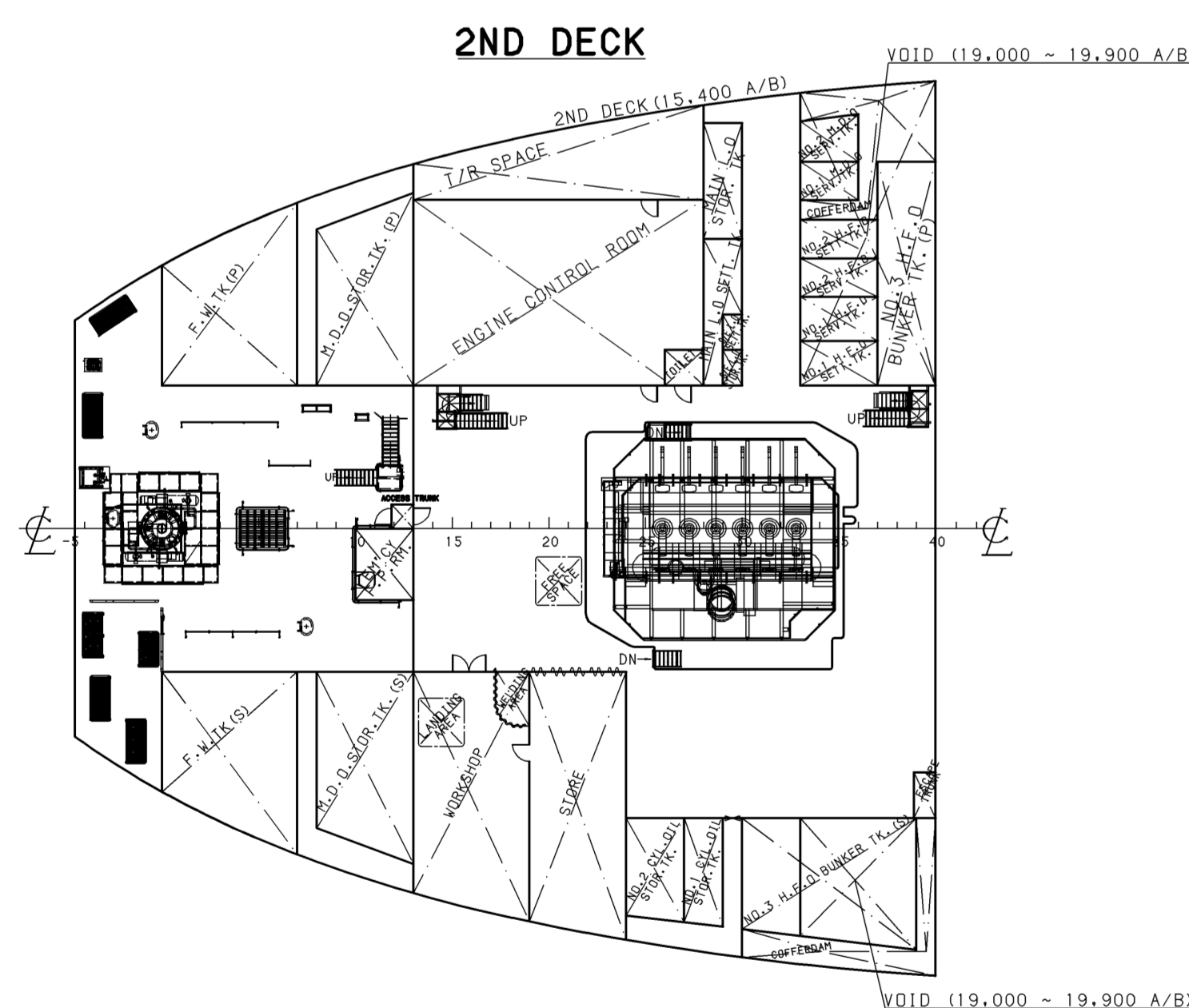
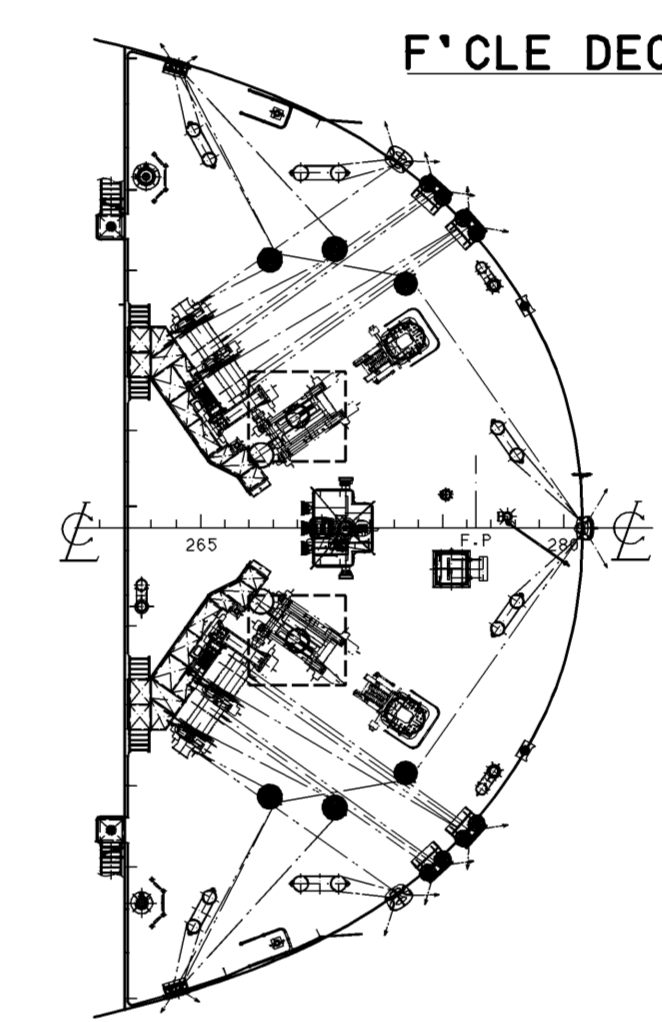
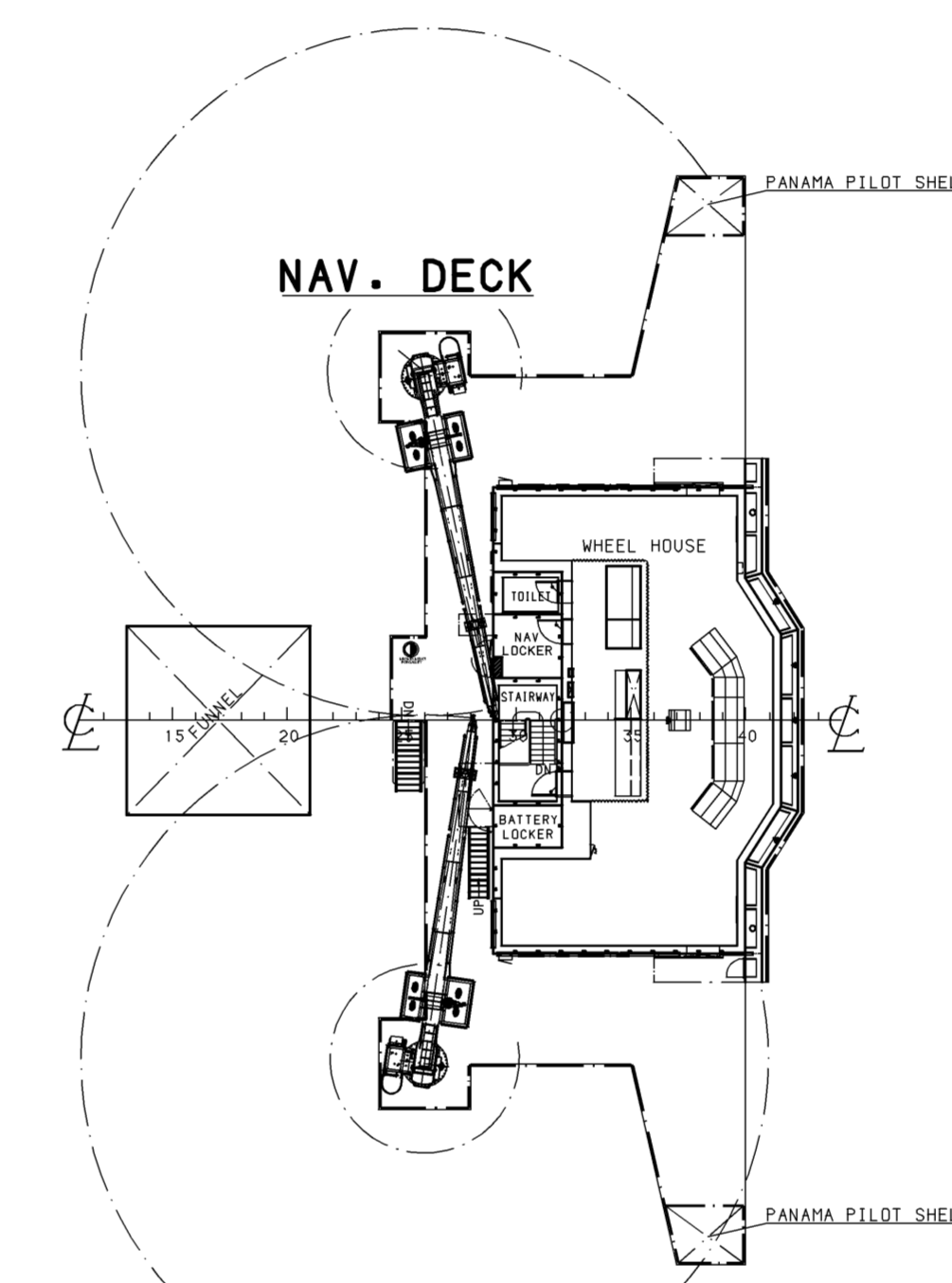
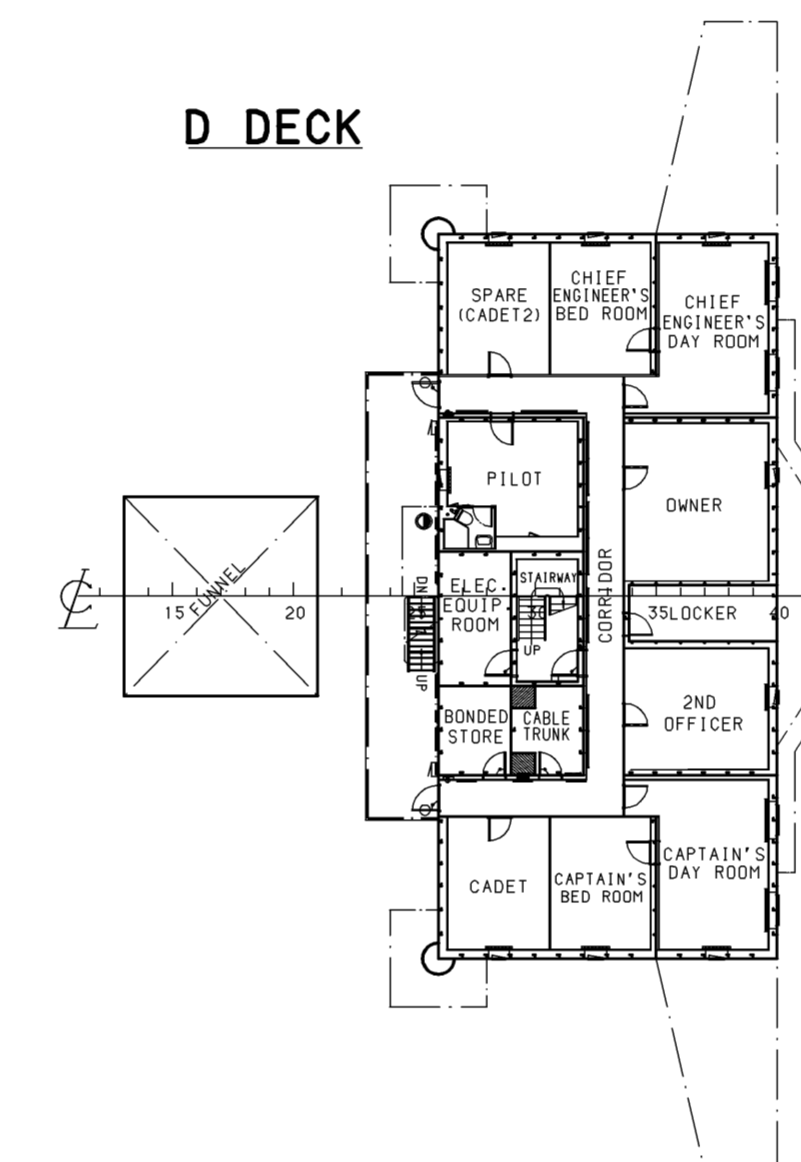
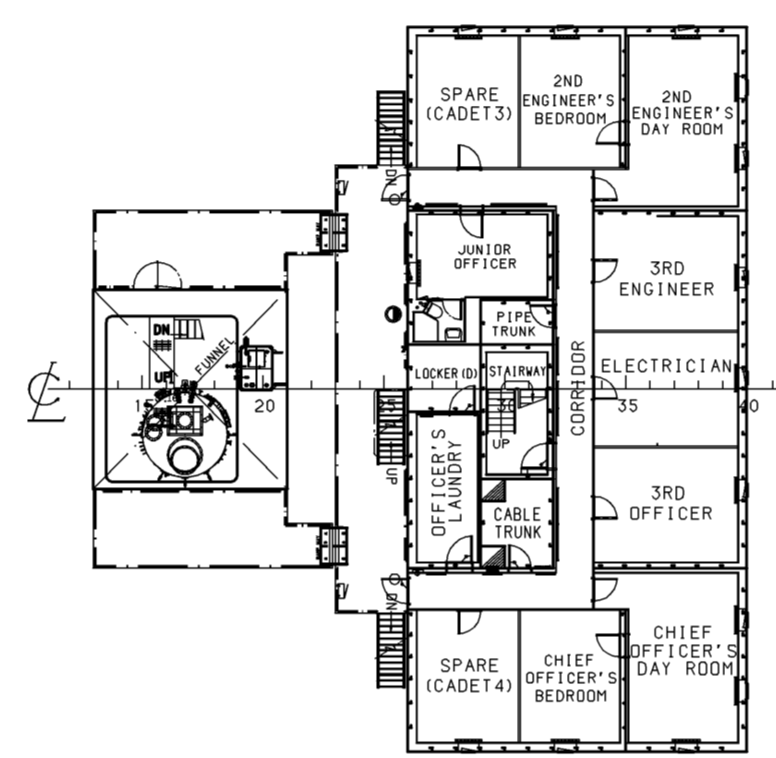
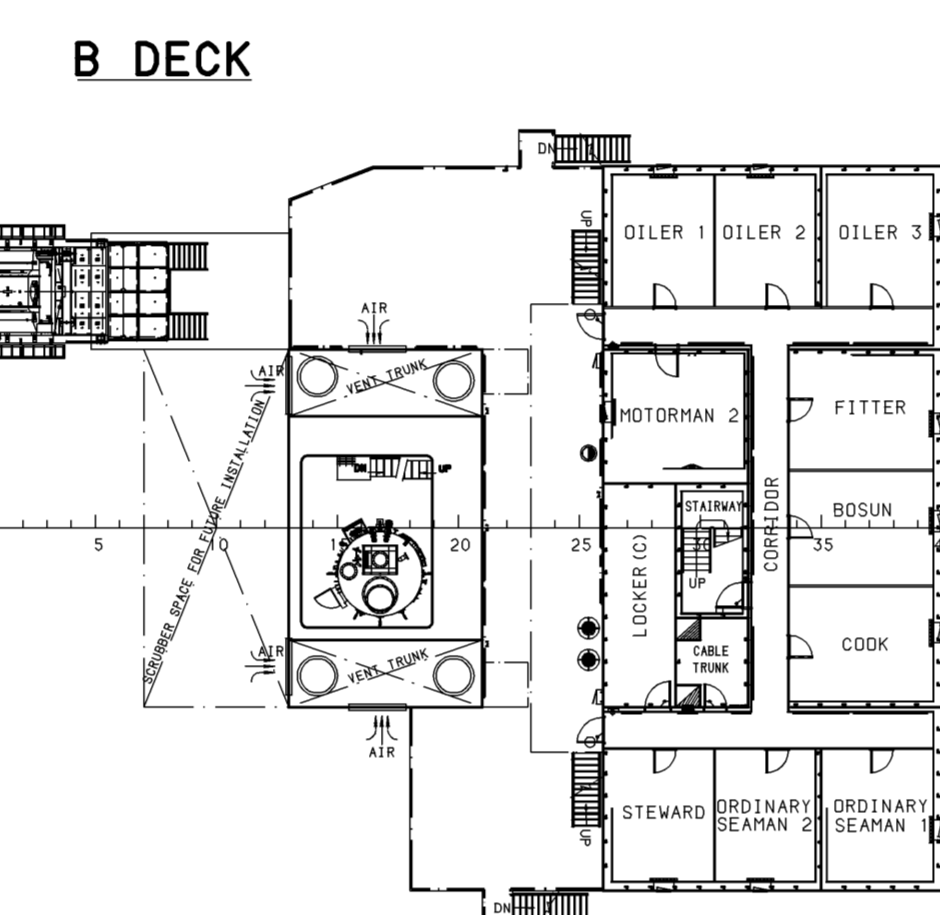
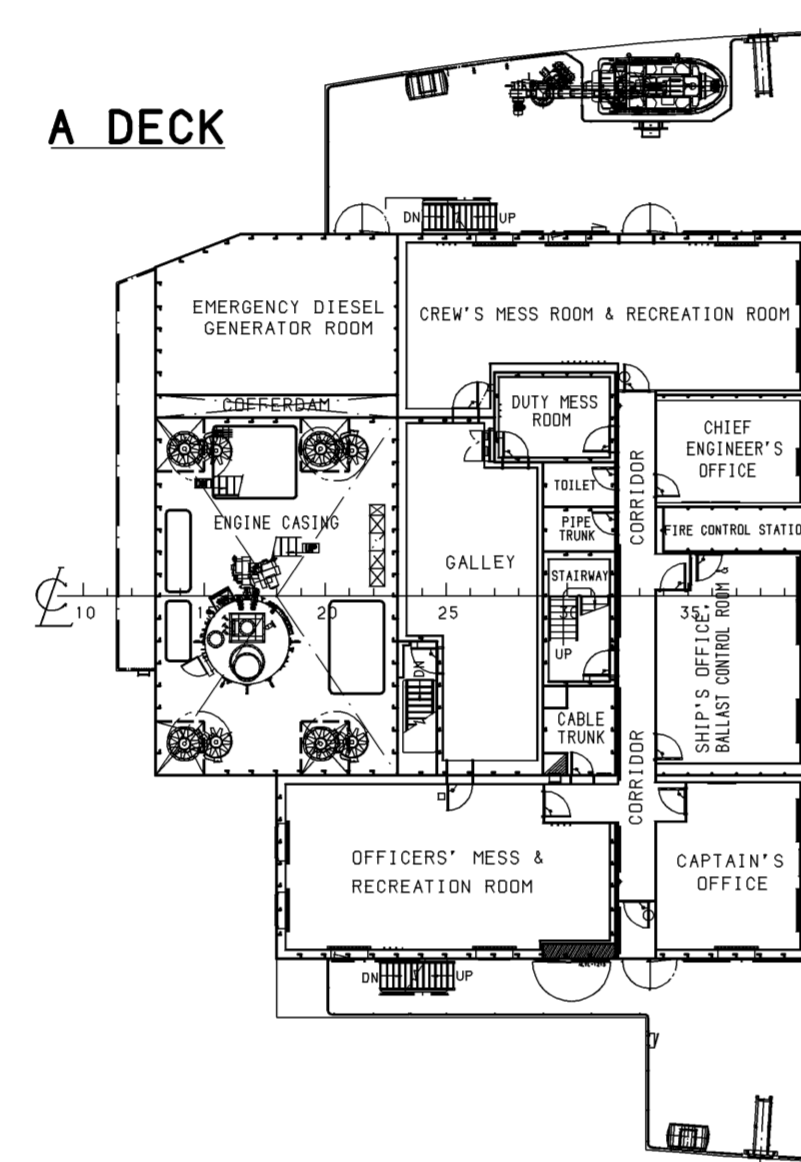
MIDSHIP SECTION

NOTE : T.S.W.B.TK AND D.B.W.B.TK TO BE CONNECTED BY PIPE.

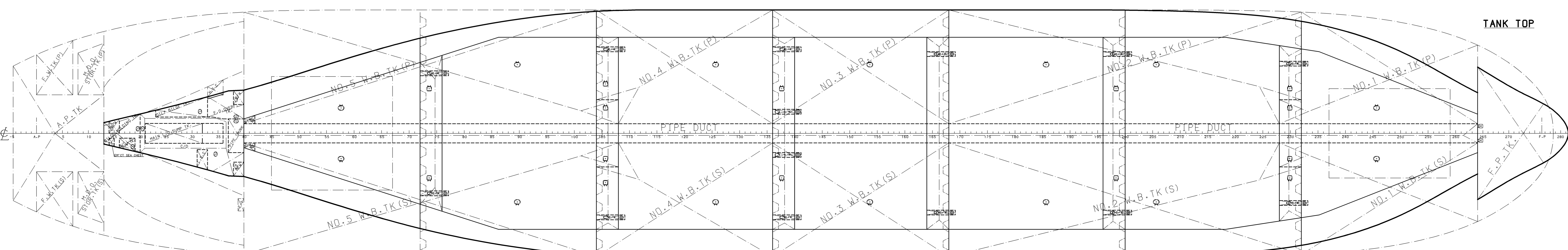
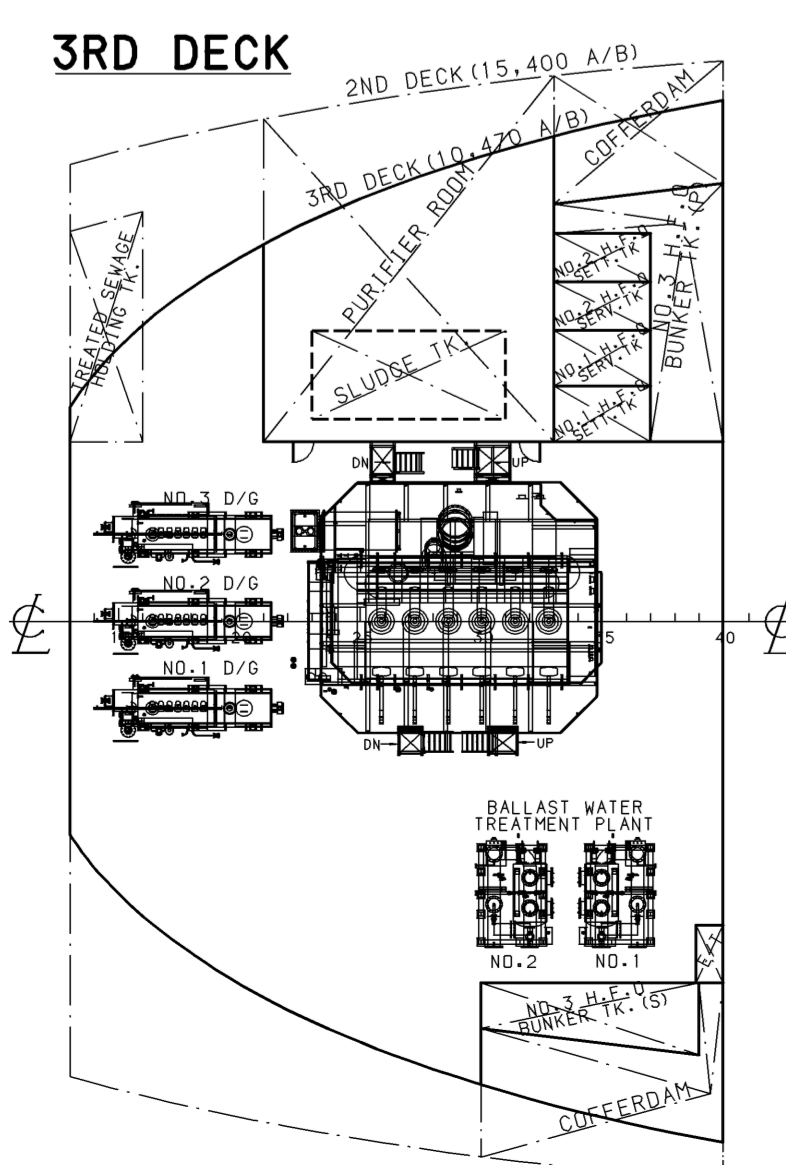
- COMPASS DECK (38,100 MM A/B)
- NAV. BRIDGE DECK (35,000 MM A/B)
- D-DECK (32,550 MM A/B)
- C-DECK (29,400 MM A/B)
- B-DECK (26,650 MM A/B)
- A-DECK (23,800 MM A/B)
- UPPER DECK (19,900 MM A/B)



PROFILE



UPPER DECK



TANK TOP

PLAN HISTORY					
DATE	REV.	MARK	DESCRIPTION	DRAWN	CHECKED
2015.09.27	FIN		FINALLY PREPARED FOR FINISHED PLAN.	E.C. MIN	J.B. LEE

PRINCIPAL PARTICULARS

LENGTH O. A. 240.06 M
 LENGTH B. P. 232.30 M
 BREADTH MLD. 38.00 M
 DEPTH MLD. 19.90 M
 DRAFT MLD. (DESIGN) 13.80 M
 DRAFT MLD. (SCANTLING) 13.80 M

MAIN ENGINE : HYUNDAI-WARTSILA W6X62 (Type II)
 NOMINAL RATING : 15,360 KW X 103.0 RPM
 MCR : 9,900 KW X 80.0 RPM
 NCR : 7,940 KW X 74.3 RPM

SERVICE SPEED AT DESIGN LOAD 14.0 KNOTS
 (NCR WITH 15% S.M.)

CLASSIFICATION : ABS
 +A1, Bulk Carrier, BC-A(hold 2, 4 & 6 may be empty).
 +ACCU, CSR, AB-CM, GRAB(20), ESP, PMA, MLC-ACCOM.
 BWT, POT, UWILD, TCH, ENVIRO, CPS, (E), +AMS, GP

FREEBOARD TYPE "B-60"
 FLAG SWITZERLAND
 COMPLEMENT 25P+6SUEZ
 IMO NUMBER 9694921

DEPT: NO. DEPT: 1 NAME	SHIP TYPE	CLASSIFICATION	CAUTION
6610	BASIC DESIGN DEP-1	A	THIS DRAWING OR DOCUMENT IS THE PROPERTY OF HANJAL MIPRO DOORVARD CO., LTD. AND IT MUST NOT BE PARTIALLY OR WHOLLY COPIED OR USED FOR ANY OTHER PURPOSE WITHOUT PRIOR WRITTEN PERMISSION OF HANJAL MIPRO DOORVARD(CO.,LTD.).
REV: NO. SHIP NO.	SHIP NAME	NAME OF DRAWING	
6750	S092	TZOUHAZ	
APPROVED	CHECKED	SCALE	DRAWING NO.
S. H. PARK	J. B. LEE	1/250	1A000B001
DATE	DRAWN	SCALE	REV. NO.
2015.09.27	E. C. MIN	1/250	FIN
	DR. H. H. H. H.	CONSOLIDATED NO.	B - 2
	HANJAL MIPRO DOORVARD CO., LTD.		